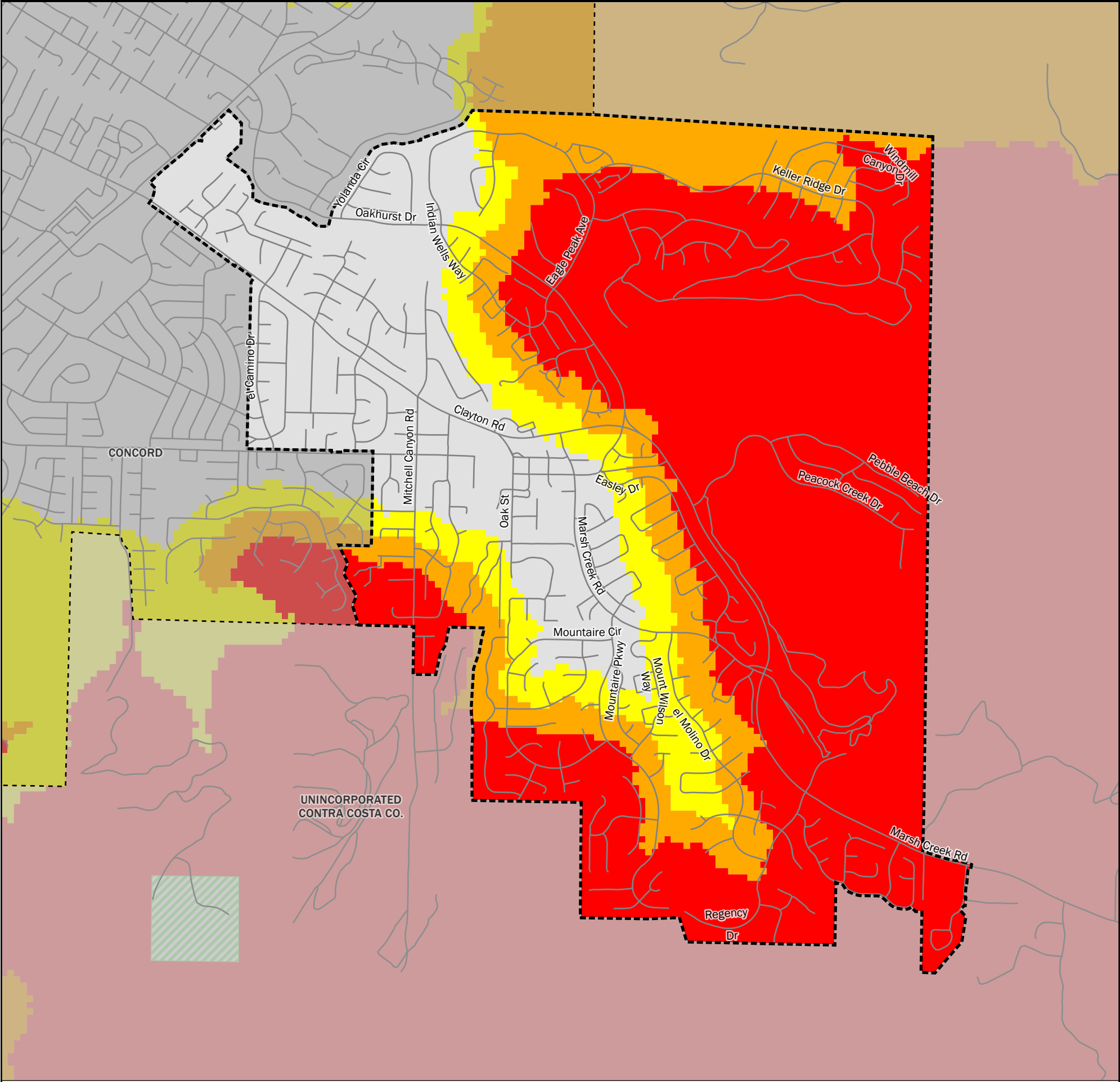




Local Responsibility Area Fire Hazard Severity Zones

As Identified by the
State Fire Marshal
February 24, 2025



Fire Hazard Severity Zones (FHSZ) in Local Responsibility Area (LRA), as Identified by the State Fire Marshal

Very High High Moderate

Fire Hazard Severity Zones in State Responsibility Area (SRA), Effective April 1, 2024

Very High High Moderate

Mi 0 0.2 0.4 0.6 0.8 1

Km 0 0.2 0.4 0.6 0.8 1 1.2 1.4 1.6

Projection: NAD 83 California Teale Albers
Scale: 1:20,000 at 11" x 17"

Incorporated City Federal Responsibility Area (FRA)

Unzoned LRA